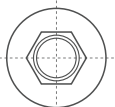




MAURI

Furniture Fittings Factory



Viteria speciale per mobili

DESIGN,
MADE AND QUALITY
IN ITALY
100%



Ferramenta per sedie



**BORCHIA TC M6
CON QUADRO
SOTTO TESTA**

340A006



**BORCHIA TC M8
CON QUADRO
SOTTO TESTA**

340A008



**BOCCOLA
PER VOLANTINI
M5, M6, M8, M10**

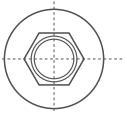
985A0



**DISTANZIALE
FORATO**

950A0





fm MAURI



**RIVETTO
FORATO M4**

612A0



**RIVETTO
FORATO M4**

612D4



**RIVETTO M5
TOP-NUT**

646A005



**RIVETTO TOP-NUT
M6 CON GAMBO
ESAGONALE**

690A006



**INSERTO ESAGONALE
M8 TP SPECIALE
FORO CIECO**

695C108



**INSERTO ESAGONALE
M8 FILETTO PARZIALE
PER PLASTICA**

695A208



**BUSSOLA TONDA
Ø24**

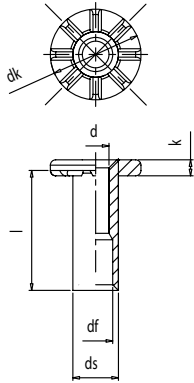
321A024

Ferramenta per sedie

646A005---

• Rivetto M5 top-nut

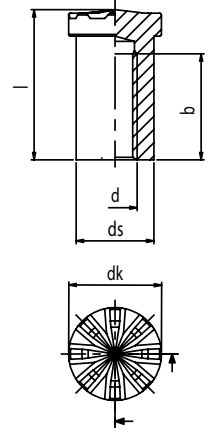
| | b | d | dk | ds | k | l |
|------------|-----|----|----|------|---|------|
| 646A00510M | 6,5 | M5 | 17 | 8,55 | 3 | 10,5 |
| 646A00512M | 7 | M5 | 17 | 8,55 | 3 | 12,5 |
| 646A00514M | 8 | M5 | 17 | 8,55 | 3 | 14,5 |
| 646A00516M | 9 | M5 | 17 | 8,55 | 3 | 16,5 |



985A0----

• Boccola per volantini

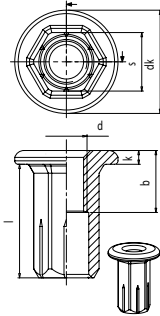
| | b | d | dk | ds | l |
|------------|----|-----|------|-----|----|
| 985A005017 | 12 | M5 | 10,5 | 8,8 | 17 |
| 985A006014 | 10 | M6 | 10,5 | 8,8 | 14 |
| 985A006017 | 12 | M6 | 10,5 | 8,8 | 17 |
| 985A006021 | 16 | M6 | 10,5 | 8,8 | 21 |
| 985A008017 | 12 | M8 | 13 | 11 | 17 |
| 985A008021 | 16 | M8 | 13 | 11 | 21 |
| 985A010021 | 16 | M10 | 14,5 | 13 | 21 |



690A006---

• Rivetto top-nut M6 con gambo esagonale

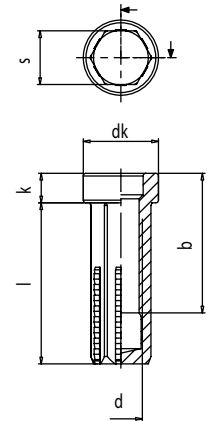
| | b | d | dk | k | l | s |
|------------|---|----|----|---|----|-----|
| 690A006010 | 6 | M6 | 15 | 2 | 10 | 8,5 |
| 690A006012 | 7 | M6 | 15 | 2 | 12 | 8,5 |
| 690A006014 | 8 | M6 | 15 | 2 | 14 | 8,5 |
| 690A006016 | 9 | M6 | 15 | 2 | 16 | 8,5 |



695C108---

• Inserto esagonale M8 TP speciale foro cieco

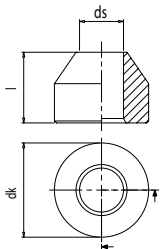
| | b | d | dk | k | l | s |
|------------|----|----|----|-----|----|----|
| 695C108030 | 26 | M8 | 14 | 5,5 | 30 | 10 |



321A024---

• Bussola tonda Ø24

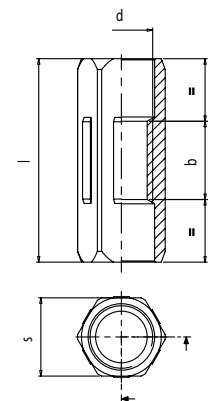
| | dk | ds | l |
|------------|----|------|----|
| 321A024018 | 24 | 11,2 | 18 |



695A208---

• Inserto esagonale M8 filetto parziale per plastica

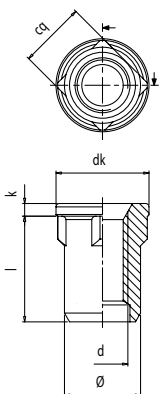
| | b | d | l | s |
|------------|----|----|----|----|
| 695A208026 | 11 | M8 | 26 | 10 |



340A00----

• Borchia TC M6 con quadro sotto testa

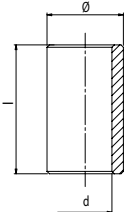
| | cq | d | dk | k | l | Ø |
|------------|----|----|----|-----|------|------|
| 340A00612M | 8 | M6 | 11 | 1,5 | 12,5 | 9 |
| 340A00813 | 11 | M8 | 15 | 2 | 13 | 11,8 |



950A0----

• Distanziale forato

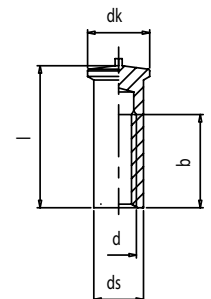
| | l | Ø | d |
|------------|----|----|-------|
| 950A012014 | 14 | 12 | 5 |
| 950A090009 | 9 | 9 | 5 |
| 950A090010 | 10 | 9 | 5 |
| 950A010009 | 9 | 10 | 7,50 |
| 950A016027 | 27 | 16 | 11,20 |
| 950A020020 | 20 | 20 | 8,10 |



612D4-----

• Rivetto forato M4

| | b | d | dk | ds | l |
|------------|------|----|----|-----|----|
| 612D404008 | 4 | M4 | 7 | 5,6 | 8 |
| 612D404012 | 7,5 | M4 | 7 | 5,6 | 12 |
| 612D404016 | 10,5 | M4 | 7 | 5,6 | 16 |



MAURI
F.lli Mauri srl

Via Barzago, 189
23852 Garlate (LC) Italy
Tel. +39 0341 681475
Fax +39 0341 681483
www.mauri-fm.it
sales@mauri-fm.it

Furniture Fittings Factory
Viteria speciale per mobili

Cap. Soc. € 500.000 Int. Vers
Iscriz. Trib.n. 3507 Reg. Soc.
N. Centro Mecc. LC 000250
C.C.I.A.A. Lecco N. 68980
P.IVA IT 00204050132

